



Building Connect

It's a Tenant Service Portal. It's a Property Website. It's a Handbook. It's a one-stop service center for tenants, prospects, and staff.



Easily Control Access to All Your Services

Service tenants, reach prospects and differentiate your property through a powerful (and easy to use) property website.

Included free with the Building Engines Platform, BuildingConnect provides CRE organizations with a simple way to self-manage and extend their online tenant services and brand with a visually stunning interface that connects tenant handbooks, service requests, leasing information, photo and video galleries, building services, visitor access, resource scheduling and more.

“*BuildingConnect looks great, reinforces our company branding, and increases the functionality for our tenants.*”

- Monica Graham, Sr. Property Manager, Harsch Investment Properties

Private Access
Public Access
Mixed Access





Building Connect

TENANT SERVICE PORTAL

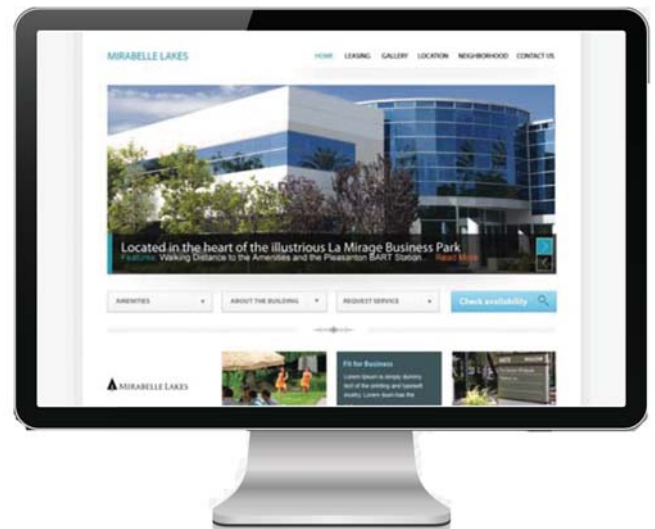
One Log-in. Everything Your Tenants Need.

- Service Requests
- Resource Scheduling
- Visitor Pre-Authorization
- Tenant Handbook
- Building Documents

PUBLIC WEBSITE

Communicate Your Brand, Market Your Services and Promote Available Space

- Easy Content Management
- Fully Branded, Fully Customizable
- Visually Compelling Design
- Promote Available Space, Building Photos, maps, amenities and neighborhood information, and more!



TENANT HANDBOOK

On-Demand Access to Property Information and Services

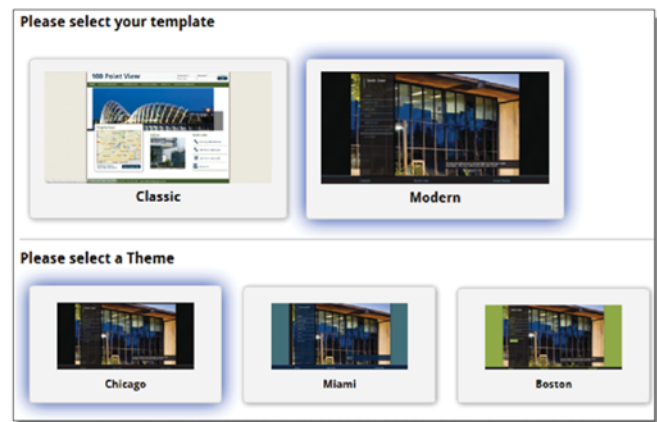
- Flexible Control over public vs. private content
- Easily Add Documents and Images
- Customize Sections and Subpages
- Improve Occupant Safety, Service and Communication



Building Connect

Building an Online Service Portal and Property Website Has Never Been Easier!

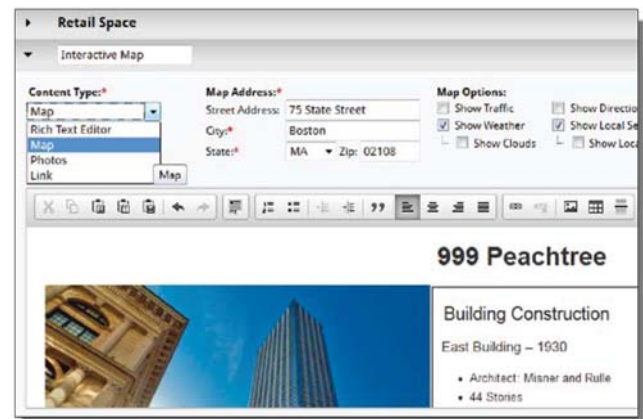
1 Choose from pre-built templates



2 Define Your Site Structure (main sections and pages)



3 Build beautiful pages with a familiar content editor



For a Demonstration of Building Connect, Call and Ask for Sales at 866.301.5300